



# Limbformation TOPTIPS

HOLIDAYS / TRAVEL 2/2

## TRAVEL KIT:

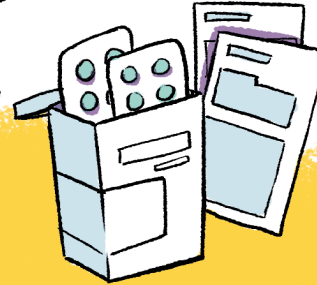
ALL ITEMS ARE FOR TEMPORARY FIXES YOU MUST SEE YOUR PROSTHETIST AS SOON AS POSSIBLE. ALL REPAIRS MUST BE DONE BY YOUR PROSTHETIST



COMPACT FIRST-AID PLASTERS + DRESSINGS



MEDICATION: KEEP A SUPPLY IN YOUR HAND LUGGAGE + TAKE PACKAGING + PRESCRIPTION

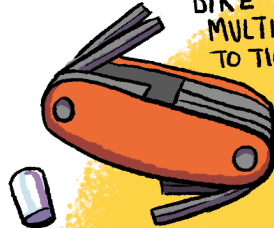


SMALL DRY PAINT BRUSH TO REMOVE SAND



FOLDING STEP

BIKE MULTITOOL TO TIGHTEN SCREWS



ANTI-PERSPIRANT TO CONTROL SWEATING



IMPORTANT NUMBERS



TRAVEL SIZE SPRAY LUBRICATION



SHOE-HORN



MOISTURISERS



CRUTCHES



SPARE CHARGER FOR MICRO-PROCESSOR KNEES



PLASTIC BAG FOR NON-WATERPROOF FEET



MICRO-FIBRE TOWEL FOR SWEAT



ANTI-BAC WIPES



EXTRA STUMP SOCKS



STUMP SHRINKER SOCKS

GAFFER/ DUCT TAPE FOR SHORT-TERM FIXES

